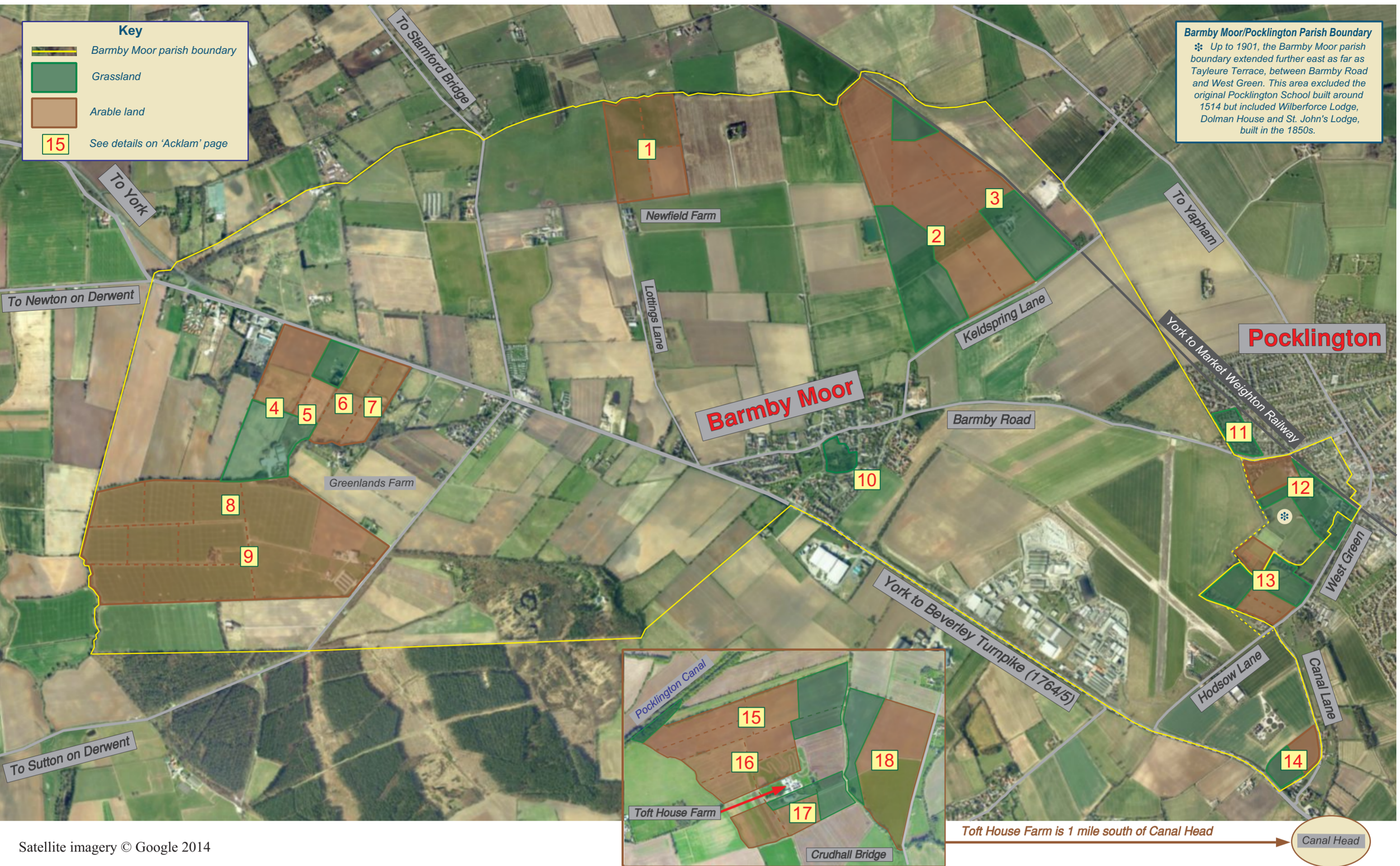


Pocklington Grammar School Land Ownership 1862



Satellite imagery © Google 2014

In 1862, the headmaster of Pocklington School, Rev. Frederick Gruggen, produced a map showing the location of the school's several land holdings in the East Riding of Yorkshire. For ease of reference and interpretation, his data has been overlaid onto a base of current satellite imagery, shaded brown for arable land and green for grassland.

The school's lands were mainly in the parish of Barmby Moor (the parish boundary is shown on the associated map) with some in the adjacent Pocklington parish. Other lands were near Acklam village, 8 miles north of Pocklington (shown below and left), plus 'Cayton Lodge' in the village of Cayton, near Filey (inset below).

In 1862, the school's lands generally followed the earlier 'close' boundaries as set out in the enclosure acts for Pocklington (1757) and Barmby Moor (1783). Some individual field boundaries had been adjusted by 1862 and only the total acreage for each group of fields is listed below (in acres, roods and perches).

In 1901, the parish boundary between Barmby Moor and Pocklington was moved south-west by 50 acres, as shown on the map, bringing some of the school's lands and properties, including Wilberforce Lodge (a.k.a. 'The Hostel'), St. John's Lodge and Dolman House, within the Pocklington parish.



Barmby Moor (post-1901)

- Close No. **1** 'Newfield Farm', north of Lottings Lane
32 acres, 2 roods, 6 perches
- Close Nos. **2 & 3** north of Keldspring Lane
147 acres, 1 rood, 4 perches
- Close Nos. **4-9** 'Greenlands Farm', south of turnpike
290 acres, 1 rood, 15 perches
- Close No. **10** Barmby Moor Manor House
4 acres, 0 roods, 0 perches

Pocklington (post-1901)

- Close No. **11** north of Barmby Road
5 acres, 1 rood, 0 perches
- Close No. **12** between Barmby Road and West Green
24 acres, 2 roods, 1 perch
- Close No. **13** north of West Green
30 acres, 1 rood, 10 perches
- Close No. **14** in 'Barrack Flatts', between the turnpike & Canal Lane
10 acres, 0 roods, 10 perches
- Close Nos. **15-18** 'Toft House Farm', 1 mile south of Canal Head
162 acres, 0 roods, 30 perches

Acklam

199 acres, 1 rood, 12 perches

Cayton

1 acre, 2 roods, 36 perches

Total acreage 852 acres, 3 roods, 4 perches

